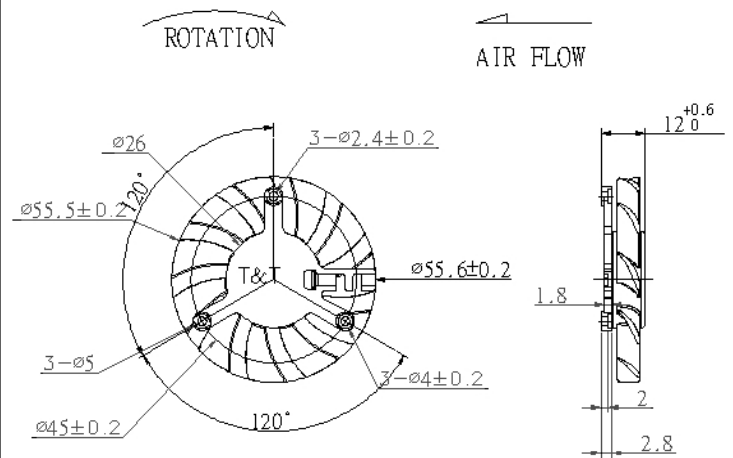
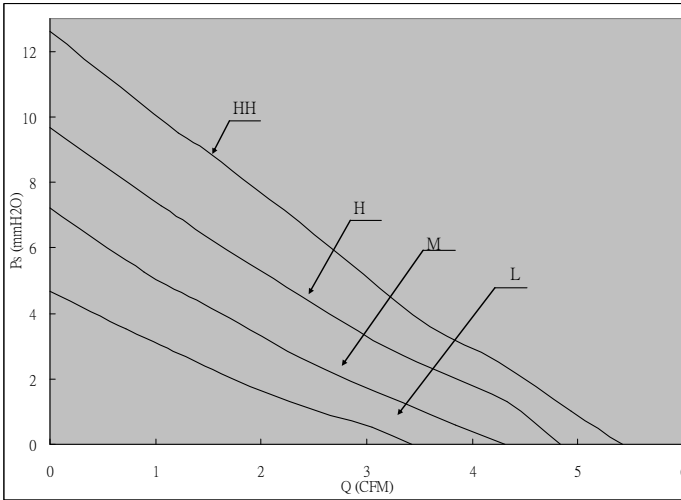
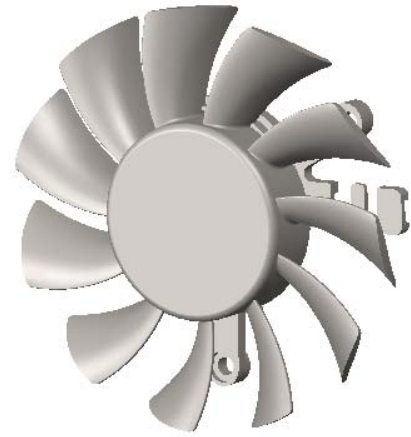


# D6010V Series (60x60x11mm) Dust-Proof Design



## BRIEF SPECIFICATIONS

MODEL NO	RATED VOLTAGE V	RATED CURRENT A	ACTUAL CURRENT A	RATED POWER W	RATED SPEED RPM	MAX. AIR FLOW	MAX. STATIC AIR PRESSURE	NOISE LEVEL DBA
						CFM	mmH2O	
D6010L12S/F	12	0.15	0.10	1.80	3000	3.44	4.63	28.6
D6010M12S/F	12	0.20	0.13	2.40	3600	4.33	7.22	33.5
D6010H12S/F	12	0.25	0.20	3.00	4200	4.82	9.63	37.5
D6010HH12S/F	12	0.30	0.28	3.60	4800	5.38	12.47	41.5

Data Change Subject To Without Notice